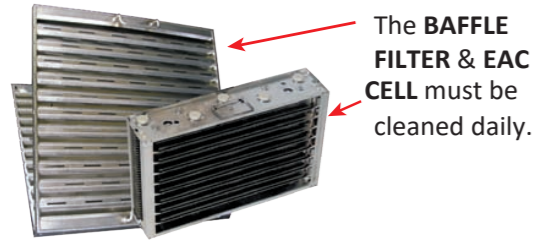


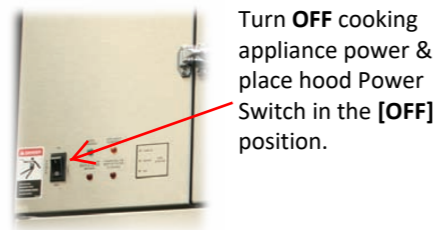
GVH-C VENTLESS HOOD CLEANING & TROUBLESHOOTING

Cleaning Instructions

STEP 1: DAILY CLEANING



STEP 2: TURN POWER OFF



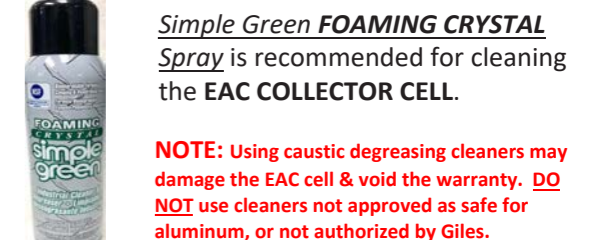
STEP 3: REMOVE FILTER ACCESS COVER or OPEN FILTER DOOR



STEP 4: REMOVE EAC COLLECTOR CELL



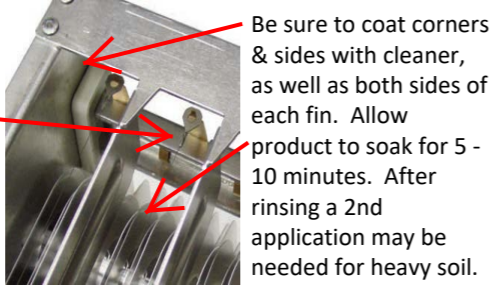
STEP 5: CLEANING AGENT



STEP 6: APPLY SPRAY DEGREASER



STEP 7: APPLY ONTO ALL GREASE BUILD-UP



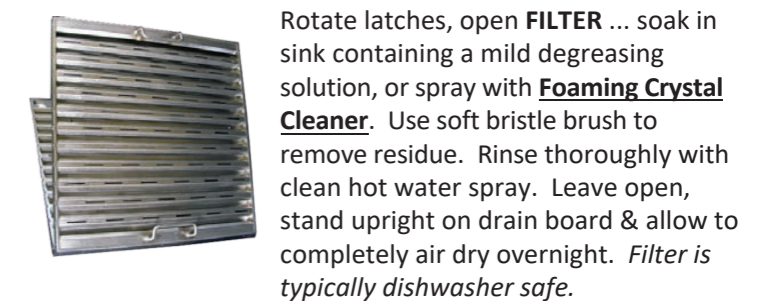
STEP 8: RINSE & DRY OVERNIGHT



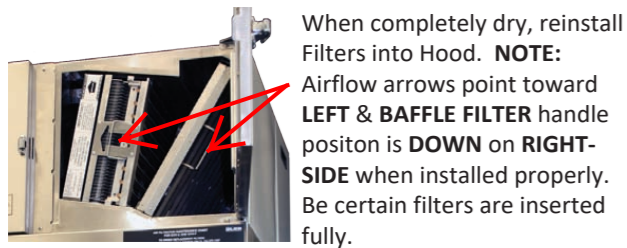
STEP 9: REMOVE BAFFLE FILTER



STEP 10: CLEAN BAFFLE FILTER



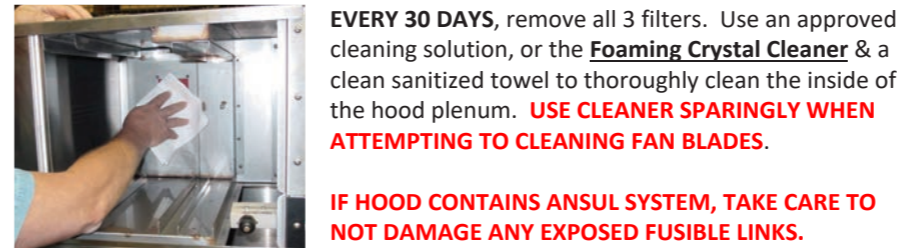
STEP 11: REINSTALL FILTERS



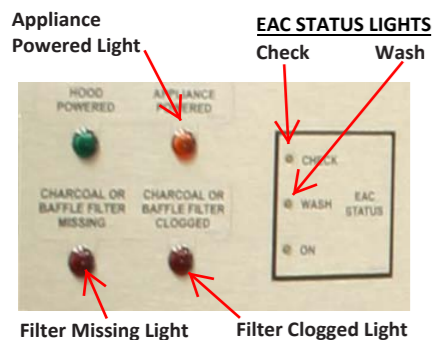
STEP 12: CHARCOAL FILTER MAINTENANCE



STEP 13: MONTHLY FILTER CABINET CLEANING



NOTE: All models have interlocks which prevent the hood from operating & powering the cooking appliance if filters are missing, damaged, or in need of cleaning. Any attempt to bypass these interlocks devices can possibly void the factory warranty.



Troubleshooting Instructions – CHECK TROUBLESHOOTING GUIDE BELOW BEFORE CALLING FOR SERVICE

Problem: WASH LIGHT ON, BEEPING TONE ALARM SOUNDING		Problem: CHECK LIGHT ON		Problem: NO APPLIANCE POWER, NO ALARMS SOUNDING and HOOD IS ON	
PROBABLE CAUSE:	REPAIR:	PROBABLE CAUSE:	REPAIR:	CALL FOR SERVICE	
<ol style="list-style-type: none"> EAC Cell missing or excessively dirty Poor contact - board dirty/faulty Cell ionizer wires broken or missing EAC power supply or module faulty 	<ol style="list-style-type: none"> Install or clean EAC cell Clean or replace contact board or CALL FOR SERVICE Replace ionizer wires or CALL FOR SERVICE CALL FOR SERVICE 	<ol style="list-style-type: none"> EAC shorted/too many bent fins touching EAC cell shorted to ground Excessive moisture on fins 	<ol style="list-style-type: none"> Repair EAC/ Straighten fins CALL FOR SERVICE Dry EAC Cell 		
Problem: CLOGGED FILTER LIGHT ON, CONTINUOUS TONE ALARM		Problem: FILTER MISSING LIGHT ON, NO ALARM SOUNDING		Problem: HOOD WILL NOT TURN ON	
PROBABLE CAUSE:	REPAIR:	PROBABLE CAUSE:	REPAIR:	PROBABLE CAUSE:	REPAIR:
<ol style="list-style-type: none"> Charcoal filter clogged Baffle filter clogged Vacuum switch out of adjustment Kinked vacuum line Fan running slow 	<ol style="list-style-type: none"> Replace charcoal filter Clean baffle filter CALL FOR SERVICE CALL FOR SERVICE CALL FOR SERVICE 	<ol style="list-style-type: none"> Baffle filter missing Baffle filter not installed properly Charcoal filter missing Charcoal filter not installed properly 	<ol style="list-style-type: none"> Install baffle filter Reinstall baffle filter Install charcoal filter Reinstall charcoal filter 	<ol style="list-style-type: none"> Improper start-up procedure Power switch bad Hood cover or door not closed & latched Supply power breaker tripped Improper supply voltage Not connected to power source or blown fuse in hood. 	<ol style="list-style-type: none"> Press & hold top "START" portion of Power Switch CALL FOR SERVICE Close hood cover or door Reset circuit breaker CALL FOR SERVICE CALL FOR SERVICE or replace fuse