



Project Name/No: \_\_\_\_\_ Item No: \_\_\_\_\_

Quantity: \_\_\_\_\_ SIS#: \_\_\_\_\_ AIA/CSI#: \_\_\_\_\_

# Multi-Appliance Ventless Recirculating Hood FSH-6



2 Configuration Options:  
Ceiling Suspended  
or  
72" Floor-Stand

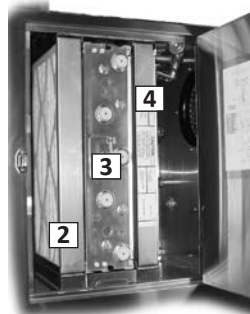


- 72" wide, Type-1, Ventless Recirculating Hood for *electric* fryers, griddles, broilers, ranges & ovens.
- Free-standing on 72" tall floor stand to maximize usable hood width (*standard*) -or- ceiling suspended version w/side skirts (*optional*).
- No venting to outside required ... generally, can be installed where conventional ventilation hood solutions are prohibited or too costly for the budget.
- Durable stainless steel construction.
- Proven 4-stage air cleaning technology meets requirements for grease-laden vapor removal for a variety of commercial cooking appliances. Listed to **UL-YZCT (-7 Canada), complies with ANSI/UL-710B**.
- Listed for the **Ansul® R102 Wet Chemical Fire Suppression System**. Hood is factory pre-plumbed, with piping, plenum nozzles, detector link brackets & cable conduit stubbed out ready for connection. Does not include appliance drop-down nozzles. **Customer supplies system, field installation, final set-up & commissioning ... must be supplied & installed by an authorized Ansul® service company (not included with purchase).**

## Design Features

### Ventless Hood System 4-Stage Air Cleaning:

- [1] Two (2) stainless steel baffle filters (**not seen**) trap large grease particulate.
- [2] Two (2) disposable pre-filters trap smaller particulate, and help to remove moisture.
- [3] Two (2) long-life, renewable Electronic Air Cleaner (EAC) collector cells electrostatically capture & collect fine particulate on collection fins.
- [4] Two (2) disposable charcoal filters help to control cooking aromas in the exhausted air.



### Standard Features:

- Built-in appliance interlock relay.
- **PUSH-TO-START** power switch ... must be pressed after power interruptions to restart hood & provide power to cooking appliances underneath ... required by code in some jurisdictions.
- Complete filter set included.
- Choose 72" tall full-skirt floor stand configuration.
- Built-in filter cleaning timer feature ... helps user maintain optimum hood performance.

## Limitations: HOOD APPROVED ONLY FOR USE WITH ELECTRICALLY HEATED APPLIANCES ... NO GAS

Appliance Type	Max. Input Power (kW)	Max. Cooking Temp.	Max. Shortening Capacity	Max. Cooking Area
Fryers	40 (Total) or 20 (per Fryer)	350°F [177°C]	160 lbs [72 kg] [Total] 80 lbs [36 kg] [per Fryer]	380 sq in [0.25 sq m] single fryer 760 sq in [0.49 sq m] any combination
Ovens	55	500°F [260°C]	N/A	68-1/2"W x 42"D [1829mm x 1067mm]
Griddles	25	400°F [204°C]	N/A	68-1/2"W x 26"D [1524mm x 660mm]
Ranges	25 Max. 8 Burners	400°F [204°C]	N/A	68-1/2"W x 26"D [1524mm x 660mm]
Broilers (Vert/Horiz)	25	500°F [260°C]	N/A	68-1/2"[1524mm] W x 26"[660mm] D 42" max height (appl top to hood btm)

### IMPORTANT INFORMATION !!

Orders for GILES Recirculating/Ventless Hood systems will not be accepted until Giles verifies ... 1). the Purchaser has received all necessary approvals from local authorities ... 2). the cooking appliances to be used are within the hood's listing limitations ... 3). the Purchaser is aware of specific requirements & limitations with which installation must comply, as stated in the **GFSE Recirculating/Ventless Hood Approval Letter**. The **GFSE Hood Approval Letter (HAL)** must be completed & submitted along with any other requested documentation. Approval by Giles Services personnel must be received prior to order acceptance.

Document is available for download at [www.gfse.com](http://www.gfse.com) under the SUPPORT menu on the VENTLESS DOCUMENTS page.

**GILES Food Service Equipment** ▪ ISO 9001-2015 Registered

PO Box 210247; 2750 Gunter Park Drive W; Montgomery, AL 36109 USA

334.272.1457 ▪ Fax 334.239.4117 ▪ Toll Free 800.554.4537 (US/Canada Only) ▪ [www.gfse.com](http://www.gfse.com) ▪ Email: [services@gfse.com](mailto:services@gfse.com)

Printed in USA, Form 66034 (Rel. Date: Aug.1998; Rev. Date: Aug.2022, Rev. N

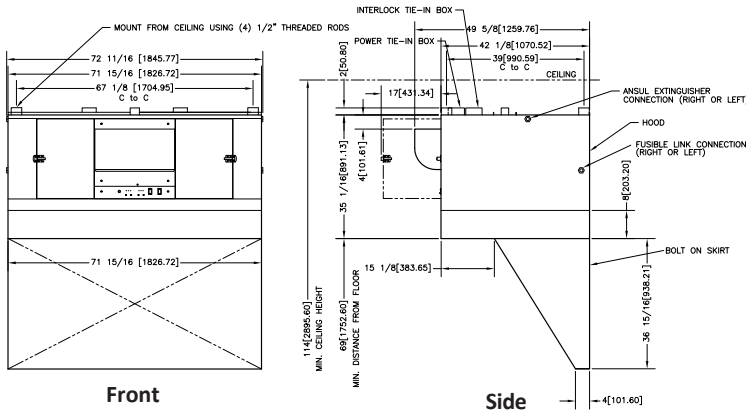
# Ventless Hood

## Model FSH-6

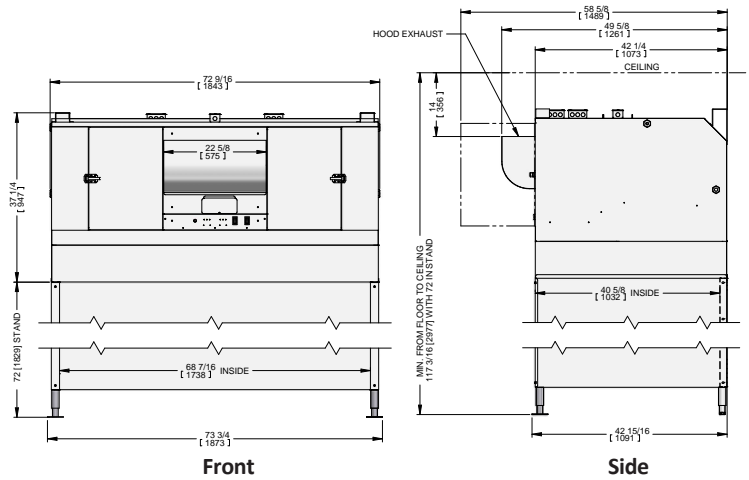
Project Name/No: \_\_\_\_\_ Item No: \_\_\_\_\_

Quantity: \_\_\_\_\_ SIS#: \_\_\_\_\_ AIA/CSI#: \_\_\_\_\_

### Ceiling Suspended



### Floor Stand



Inches [mm]

## Specifications

**Construction:** 18 & 20-Ga high-grade stainless steel sheet metal ... formed & welded

Dimensions: * Includes Side Skirts			
Width	Depth	Height	
		Suspended	Floor Stand
72-11/16" [1846 mm]	49-5/8" [1260 mm]	*74" [1880 mm]	117-3/16" [2977 mm]

Electrical Specifications: Hood Only			
Voltage	Hz	Phase	Amps
208-240	60	1	8
220	50	1	8

• Power cord NOT provided; field wiring required.  
• Neutral line required for lights.

### Hood Mechanical Specifications:

Hood Exhaust -	840 to 940 CFM
Sound Level (approx.) -	75 dB
Min. Clearance -	14" [336 mm] (Exhaust to Ceiling)

### Shipping Specifications: Freight Class 125

Crated Wt:	Suspended:	788 lbs [357 kg]
	Floor Stand:	925 lbs [420 kg]
Cube:	56"[1422mm] x 86"[2184mm] x 53"[1346mm]=147.7 cu ft [4.2 cu m]	

**Accessory Items Included:** (2) Baffle Filters • (2) Pre-Filters • (2) EAC Filter Cells • (2) Charcoal Filters • (1) Tube Sealing Silicone • (1) Can, Spray Foam EAC Cell Cleaner (sample)

## IMPORTANT! Before Ordering

- Purchaser must obtain, read, complete & submit approval a [Giles Hood Approval Letter \(HAL\)](#). By signing a HAL, the purchaser affirms that installation site has been assessed & it is compliant with the minimum requirements, stated therein, regarding kitchen size, ceiling height, fresh outside air supply, room air exchange rate, exhaust ventilation, clearances, etc.
- Verify that cooking appliances to be used are within limitations shown in the table on first page ... contact factory to resolve any questions.
- Does available electrical power meet hood specifications?

## How To Specify

### 1 Determine Hood Item Number:

✓	Item Number	Voltage	Hz	Ph	Configuration
	71463	208-240	60	1	Floor Stand (Standard)
	71865	220-230	50	1	
	78973	208-240	60	1	Ceiling Suspended (Optional)
	70535	220-230	50	1	

### 2 Extra Accessories (sold separately)

Specify quantity:

✓	Qty	Description	Part Number
		Pre-Filter	91707
		EAC Filter (Left-side)	20521
		EAC Filter (Right-side)	20520
		Charcoal Filter	32056
		EAC Foaming Spray Cleaner (12-ct Case, 20-oz can)	41510

Specifications and/or product design are subject to change without notice. Such revisions do not entitle the buyer to corresponding changes, improvements, additions or replacements for previously purchased equipment.

Printed in USA, Form 66034 (Rel. Date: Aug.1998; Rev. Date: Aug.2022, Rev. N)



2750 Gunter Park Drive West • Montgomery, AL 36109 USA  
334.272.1457 • Toll Free: 800.554.4537

PROVEN & TRUSTED SINCE 1952